

Call Board

Volume 44 Issue 8

April 2005

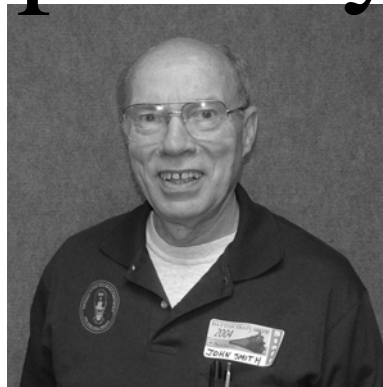
Super Saying

At the March meeting, Wil Davis taught us how to weather rolling stock with a variety of chinks available at craft and hobby stores, and with the specialized weathering powders available from Joel Bragdon (www.bragdonent.com/weather.htm). Last month I had written here, incorrectly, that John Santel would present the March program. However, as I write this, John is scheduled for the April meeting.

Rick Lach and other members are planning an outing on The Whitewater Valley Railroad for all Division members and their guests. We can have some fun, and at the same time, show our spouses our appreciation for their support (or tolerance, as the case may be). We're hoping to be able to reserve the dining car, and treat our significant others to dinner during the train ride. Please plan join us. Details to follow.

Phyllis and I are spending April 1st and 2nd at Hawk's Nest, West Virginia, at a C&O Modeler's Weekend Retreat. Hawk's Nest is high on the bank of the New River gorge, through which the C&O built the main line now owned by CSX. The planned program includes slide shows, modeling clinics, and a tour of Thurmond and three other historic sites in the gorge. By the time you read this we'll be back, probably overdosed on slide shows and railfanning.

Speaking of railfanning, Division 5's February Newsletter had a



very nice article by a Ken Stroebel, reviewing the web site at www.railfanswelcome.com. The site, maintained by Dave Marshall, has a database of railfan-friendly train watching locations, and a database of scanner frequencies, both organized by state. In Mr. Marshall's introduction, he says, "Some of these facilities were built with railfans in mind, but most are public areas that just happen to be on a Railroad. Included are parks, bicycle and hiking trails, overpasses with good sidewalks, 'common railfan locations' where local and railroad police are known not to bother railfans, pedestrian bridges and many other railfan spots. Some of the locations are not great locations for photos, but all are trouble-free places to watch and enjoy trains."

Mr. Marshall also says, "This project started when I read about the newly built Flatonia Texas Rail Park in the February 2003 issue of Trains Magazine. Seeing that article and picture got me to wondering about how many other similar facili-

ties exist besides Rochelle, Illinois and Deshler, Ohio. Then I remembered Herrlinger Park on Union Street in Troy which I frequently visit, and Roscoe Roof Park in Carlisle, Ohio - not rail parks built for railfans, but nonetheless, parks where railfans can go and not worry about being run off by the railroad or local police."

For each state, Marshall lists locations alphabetically by city. Here is the information from one of his two entries for Carlisle:

- CSX former B&O Toledo Sub, 25+ trains daily, ATCS in use
- Roscoe Roof Park, Park Shelter House, Restrooms
- Beachler Rd between Meadowlark Rd and Lower Carlisle Rd, 1/2 mile south of St Rt 123
- Lat N39° 34.633' Lon W84° 19.623'
- CSX 160.230, CSX 160.290

I highly recommend railfanswelcome.com. If you're a railfan, and don't yet have internet access at home, this web site is well worth a trip to your local library for a look.

At the April 17th meeting John Santel will present his techniques for painting rolling stock. See you Sunday.

John

From the Webmaster . . .

I'm sure that most of the members are aware that the Division maintains a website (<http://www.modelraildayton.com>) to promote the hobby locally and to provide information to members and guests on a timely basis. Our visitor statistics tell us that the site gets a lot of traffic, but we have no way of knowing how much is outside visitors and how much is usage by the membership.

To enable us to plan our site content to suit the users we have, I have a request. If you are a member of the Division, or a regu-

lar visitor to our meetings and functions, and you use the website, would you drop me a short E-mail through the site or at my personal mail at horailhead@earthlink.net and let me know how you use the webpage? Do you look for news updates? Are you checking for photos of layouts? Is there something you'd like to see on the site that isn't there? This site is maintained for you, the members, and we want to be sure it meets your needs, whatever they may be (within reason, of course).

Also, if you run across a website of particular interest to the membership, let me know and

we'll link to it on our site. I try to keep a few fresh, new sites on the front page on a regular basis.

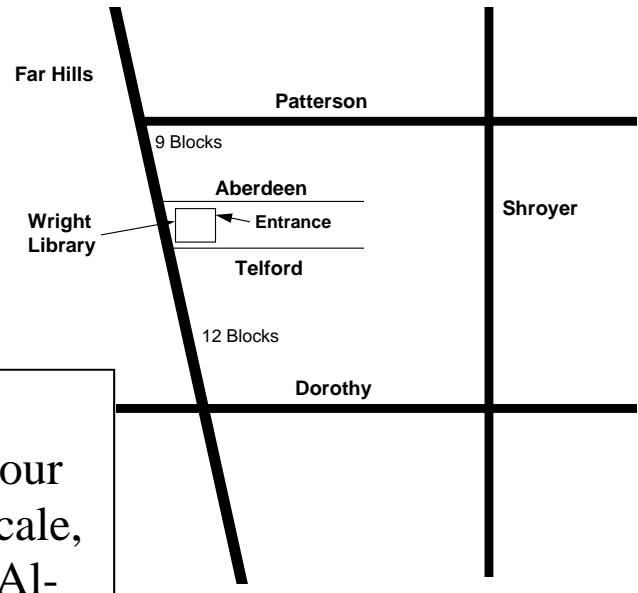
John Smith, our Superintendent, has suggested that we build a database of email addresses of our members so we could send out news updates if there is something that we'd like to get into the hands of the membership quickly. Participation would be voluntary, and all email addresses would be kept secure, accessible only to the Webmaster and the BOG. If interested, let us know.

Thanks to all – Norm Courtney,
Division Webmaster

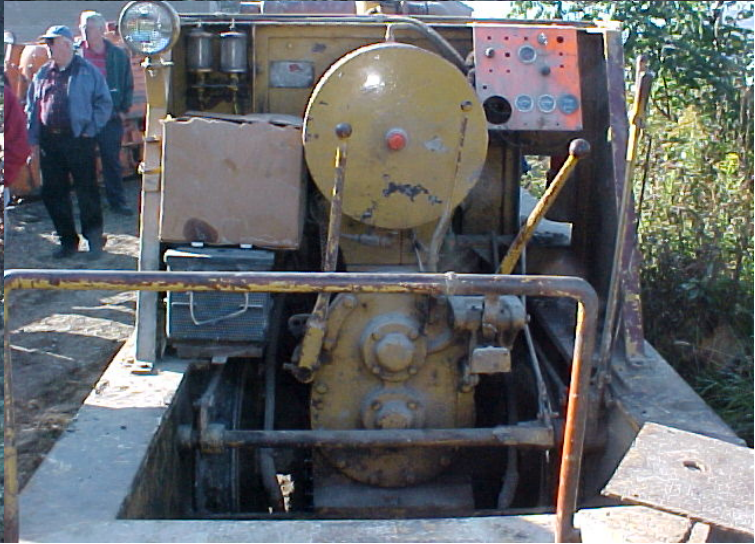
Richard Davoust provided the following photos of “critters” to accompany last month’s article by Jim Foster.



**You are invited to the April meeting on
Sunday the 17th at 2pm at the
Wright Memorial Library
1776 Far Hills
Oakwood, Ohio
Visitors and Guests Always Welcome**



Layouts Needed
We have run out of layouts to visit after our meetings. The layouts can be any size, scale, and stage of completion. Contact Bruce Albright for more information.
Richard Davoust provided the following photos of “critters” to accompany last month’s article by Jim Foster.



Micro Layouts for Model Railroads

At a recent Division 3 meeting, a member mentioned that negotiations for layout real estate with his better half had been spectacularly unsuccessful. It was suggested that he look into the concept of a "micro layout".

To quote Carl Arendt, author and expert on the subject: "micro layouts" have been defined as "small model railroads, usually less than three or four square feet in area, that nonetheless have a clear purpose and excellent operating capability." Carl's website at <http://carendt.us/index.html> covers the subject in great detail, including over 250 track plans from around the world. He also includes information from his clinic "Fun With Micro Layouts". The clinic was just presented at the Division 2 MCR Pittsburgh Jamboree in March. Highlights appear at <http://carendt.us/clinic/>. There is also a very active small layout group at

<http://groups.yahoo.com/group/small-layout-design/>.

We have seen local examples of these tiny operations, but it has become a major movement in the hobby, especially among urbanites and others with space limitations. Modelers cramped for space have frequently built modules, but the advent of the "micro" allows operation as a freestanding unit. These "micros" also afford one an extreme level of portability, another feature appealing to folks frequently "on the move".

These layouts have an additional advantage. With benchwork and track work reduced to a minimum, scenery and detail can be brought to a spectacular level. There seems to be no limit to the level of detail that is included in some of the examples found on the web. What a wonderful way to put some of the "fun" back into model railroading.

We would enjoy seeing or hearing about any "micros" in the area. If you've built one, feel free to bring it, or at least photos, to a

meeting. I would also be happy to include these layouts on the webpage. Let's treat the world to the elegance of small! With enough interest, this could turn into a contest category in the future. In fact, with the loosening of the size constraints, a "micro" would probably qualify under the "Scene" category in July.

Model Showcase for May Meeting

As a way to encourage participation in the NMRA model and photo contests, as well as the railroad prototype modeler (RPM) room at the National Convention in Cincinnati (CL2005), Division 7 will be holding a showcase display at the May meeting. Division 3 does not have a contest scheduled for the May meeting and we encourage our members to bring in models, photos and slides they plan to enter at CL2005.

Date	Location	Contest	Program	Layout
17 April	Wright Memorial Library	Thumbz	Airbrush Painting By John Santel	
15 May	Joint Meeting with Division 7 Doubletree Suites Miamisburg, OH	Model Showcase	Sam Swanson	Allen McClelland Wes Reece
16 June	Darke County Model RR Club Greenville, OH	No Contest		Ron Dietrich
17 July	?	Scene (Any Size)		